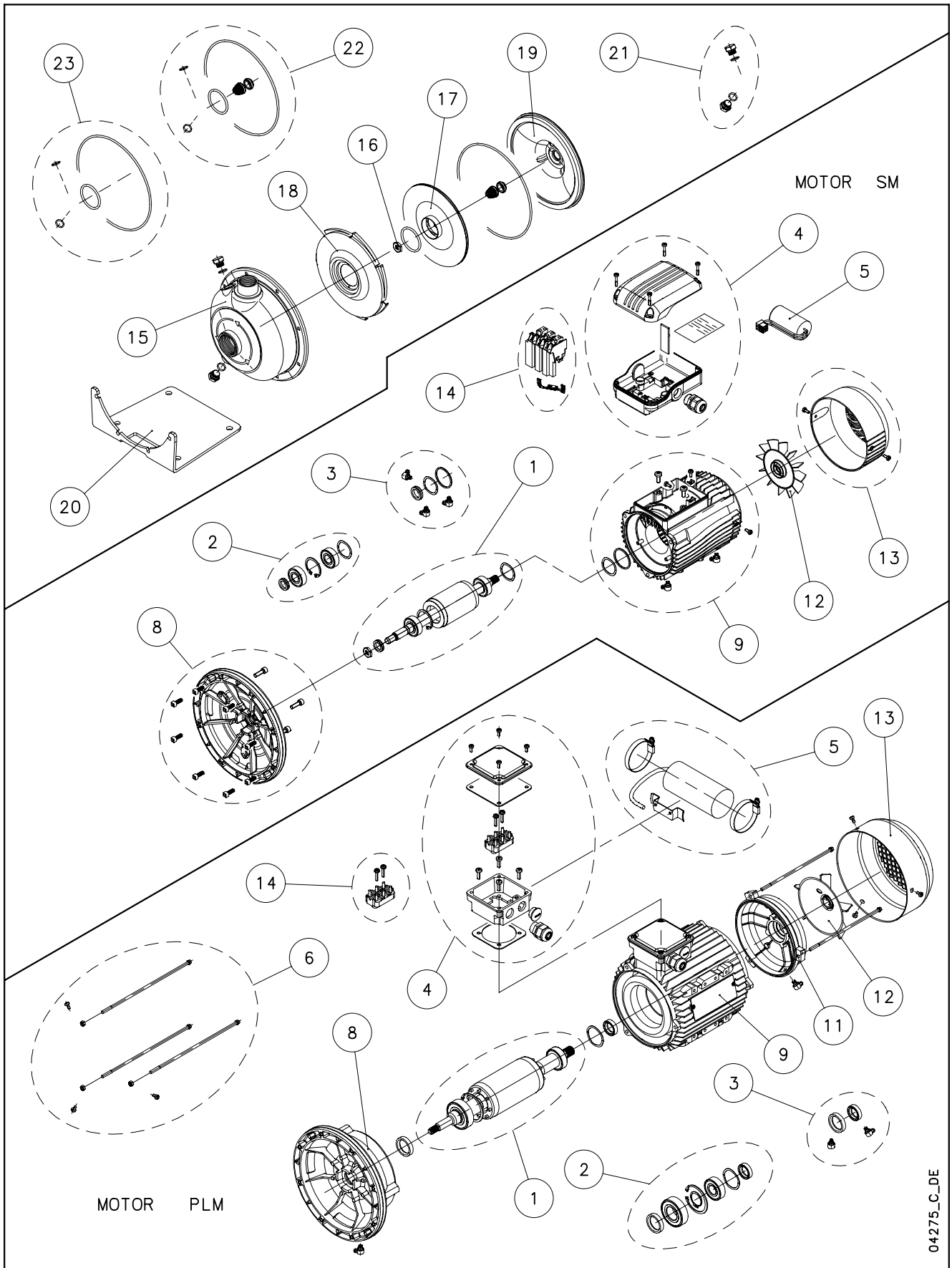


CEA / CAX



04275_C_DE

Lowara, Flygt and Vogel Pumpen are a trademark of Xylem Inc. or one of its subsidiaries. Goulds is a registered trademark of Goulds Pumps, Inc. and is used under license.

N.	Descrizione it	Description en	Description fr	Beschreibung de	Descripción es	Descrição pt
1	Albero rotore completo	Shaft rotor complete	Arbre rotor au complet	Rotorwelle Komplete	Eje rotor complete	Rotor completo
2	Cuscinetti - Anelli	Bearings - Rings	Roulements - Anneaux	Lager - Stopfen	Cojinetes - Anillos	Rolamentos - Anéis
3	Anelli tenuta - Tappi	Oil seals - Plugs	Bagues étanchéité-Bouchons	Abdichtungsringen-Schrauben	Anillos estanqueidad- Tapones	Retenores - Bujões
4	Scatola morsettieria	Terminal box	Boite a bornier	Klemmenkasten	Caja de bornes	Caixa de terminais
5	Condensatore	Capacitor	Condensateur	Kondensator	Kondensador	Condensador
6	Tiranti PLM90	Tie rods PLM90	Tiges PLM90	Zugstangen PLM90	Tirantes PLM90	Tirantes PLM90
8	Lanterna	Adaptor	Lanterne	Laterne	Adaptador	Adaptador
9	Cassa statore	Stator housing	Carcasse stator	Statorgehäuse	Carcasa estator	Carcaça estator
11	Scudo posteriore NDE	Rear shield NDE	Flasque arriere NDE	Hinteren Schild NDE	Escudo posterior NDE	Proteção posterior NDE
12	Ventola	Fan	Ventilateur	Lüfterrad	Ventilador	Ventilador
13	Copriventola	Fan cover	Couvercle de ventilateur	Lüfterradhaube	Tapa ventilador	Cobertura do ventilador
14	Basetta con perni	Base with pins	Bornier avec fiches	Klemmbrett mit zapfen	Soporte de pernos	Caixa de terminais
14	Morsettieria (Plug-in)	Terminal block (Plug in)	Bornier enfichable (Plug in)	Steck-Klemmkasten (Plug in)	Place de bornes (Plug in)	Terminais (Plug in)
15	Corpo pompa	Pump body	Corps de pompe	Pumpengehäuse	Caja bomba	Voluta bomba
16	Dado girante	Impeller nut or bolt	Roue ecrou	Laufmutter	Rodete tuerca	Parafuso do Impulsor
17	Girante	Impeller	Roue	Laufrad	Rodete	Impulsor
18	Diffusore	Diffuser	Diffuseur	Diffusor	Difusor	Difusor
19	Disco porta tenuta	Seal housing plate	Disque de support garniture	Dichtungsdeckel	Disco de alojamiento sello	Dique alojamento do selo
20	Piede pompa	Pump foot	Piede de pompe	Pumpenstützfuss	Bomba pies	Pé da bomba
21	Tappi + OR	Plugs + ORings	Bouchons + joints torique	Schrauben + OR	Tapones + junta tórica	Bujões + OR
22	Kit tenuta mecc. + OR	Mechanical seal + OR kit	Kit garniture mec. + joints toriques	Gleitringdichtung + O-Ring [Satz]	Kit sello mec. + junta tórica	Kit Empanque mecanico + O-Ring
23	Kit guarnizioni OR	O ring kit	Kit joints toriques	Dichtungssatz	Kit juntas tóricas	Kit guarnições OR
N.	Beschrijving nl	Περιγραφή el	Açıklama tr	Kuvaus fi	Описание ru	Opis pl
1	Rotor as compleet	επάνω και το κάτω μέρος του	Rotor mili	Roottori akseli	ось ротора	Wałek kompletny (z rotorem)
2	Lagers - Ringen	Τριβεία- δακτύλιοι	Rulmanlar - Ringes	Laakeri - Rengas	Подшипник - кольцами	Łożyska - pierścienie
3	Zegel ringen - Vulpluggen	πτερελαίου παρεμβύσματα - πώμα	Fok ringes - Tapalar (Fişindedir)	Ölly tiivisteet - Tulppa	прокладки для нефти - штепсели	Uszczelka olejowa – zatyczki
4	Kabelkast	Πίνακες τερματικών	Terminal Kutu	Liitinkotelon kansi	соединители коробка	Skrzynka zaciskowa
5	Condensator	πυκνωτ	Kondansatör	Kondensaattori	конденсатор	Kondensator
6	Trekstangen PLM90	Ράβδοι σύνδεσμοι PLM90	Çekme çubukları PLM90	Ankkurirauta PLM90	Тяги PLM90	Szpiłki gwintowane PLM90
8	Lantaarnstuk	προσαρμογέα	Adaptör	Adaptér	адаптер	Piasta
9	Statorhuis	Έδρα κατοίκι	Statör karteri	Staattori kaapit	Корпус статор	Stator Nadawcza
11	Achtergedeelte Motorhuis NDE	Πίσω πτεράσμα NDE	Arka koruma NDE	Laakerikilpi NDE-pää	назад щит NDE	Tyłna tarcza NDE
12	Ventilator	Ανεμιστήρ	Vantilatör	Tuuletin	вентилятор	Wentylator
13	Ventilatorkap	Ανεμιστήρ Ελάσματα κάλυψης	Vantilatör kapağı	Tuuletinkotelo	вентилятор крышка	Oslona wentylatora
14	Klemmenbord	Τερματικές μονάδες	Kaide bacaklar	Liitinalusta	контактная колодка	Podstawa ze sworzeniami
14	Klemmenbord (Plug in)	Τερματικές μονάδες (Plug in)	Kaide bacaklar Plug in	Liitinalusta Plug in	контактная колодка Plug in	Podstawa ze sworzeniami Plug in
15	Pomphuis	Αντλή πλαίσια επένδυση	Pompa gövdesi	Pumpu kotelo	Корпус насоса	Korpus pompy
16	Bout de waaier	Φτερωτές στροφέιο μπουλόνι	Rotorun somun	Juoksupyörän pultit	импеллер орех	Wirnika (nakrętka)
17	Waaier	Φτερωτές στροφέιο	Pompa rotorun	Juoksupyörän	импеллер	Wirnika
18	Diffusor	διαχυτήρας	Difüzör	Diffuusioyksikön	диффузор	Dyfuzor
19	Dichtingssteunplaat	Μηχανικό Σφραγίδα Πλάκας	Sızdırmazlık elemanı diski	Tiivisteen lautanen	мех. печать пластинка	Tarcza uszczelki
20	Pomp voet	Αντλή ποδιού	Pompa ayak	Pumpu jalka	насос стопы	Pompy silnika
21	Valpluggen + O-ring	πώμα+ OR	Şarj fişi + O-Ring	Tulppa + O-rengassarja	штепсели + OR	Zatyczki (korek) + OR
22	Kit mech. afdichting + O-ring	Μηχανική σφραγίδα Σετ + OR	Mekanik salmastra kiti + O-Ring	Mek. akseliiviste + O-rengassarja	Комплект мех. печать + OR	Zestaw uszczelniający mech. + OR
23	Set O-ringafdichtingen	παρεμβύσματα OR Σετ	O-Ring kiti	O-rengassarja	Комплект прокладок OR	Zestaw uszczelkek OR

CEAM/A - CEAM/P

ELP 1 ~, 2P 220 - 240 50	CEAM --->	70/3/A	70/5/A	80/5/A	120/5/A	210/3/A	210/4/A	210/5/P
		107330000	107330010	107330020	107330040	107330060	107330070	101800080
		120/3/A	210/2/A			370/1/A	370/2/A	370/3/P
		107330030	107330050			107330090	107330100	101800110
	kW ->	0,37	0,55	0,75	0,9	1,1	1,5	1,85

KIT

Pump

16-17*	Impeller + nut		KL04AFV	KL04AFW	KL04AFX	KL04AFZ	KL04AHC	KL04AHD	KL04AHE
				KL04AFY	KL04AHB		KL04AHF	KL04AHG	KL04AHH
22*	Mech Seal + OR	Material-->	VBPGF	VBEGG	VBVGG	U3Q1KGG	U3Q1TGG		
			KL01ABD	KL01ABE	KL01ABF	KL01ADV	KL01ADW		
	Mech Seal + OR	Material-->	JQ1EGG	U3CEGG	JQ1VGG	U3CVGG	U3Q1VGG	--->CEA-V	
			KL01ADR	KL01ADS	KL01ADT	KL01ADU	KL01ADZ	D.14	
23*	OR NBR Kit		KL02ABN						
	OR EPDM Kit		KL02ABP						
	OR FPM Kit		KL02ABQ						
	OR FTFE Kit		KL02ABR						
21	Fill-Drain plug NBR		KL34AAN						
	Fill-Drain plug EPDM		KL34AAP						
	Fill-Drain plug FPM		KL34AAQ						
	Fill-Drain plug PTFE		KL34AAR						

Motor

1	Shaft rotor complete	KL09AAA	KL09AAH	KL09AAK	KL09AAL	KL09AAM	KL09AAN	5KL09AAS
2*	Bearings - Rings	KL11AAA	KL11AAA	KL11AAA	KL11AAA	KL11AAC	KL11AAC	5KL11AAA
	Bearings Type	6202/6202				6204/6204		6203/6205
9	Stator housing	KL25AAA	KL25AAC	KL25AAE	KL25AAG	KL25AAL	KL25AAN	5KL25AAG
3	Oil seals - Plugs	KL03ABP	KL03ABP	KL03ABP	KL03ABP	KL03ABP	KL03ABP	5KL03AAA
4	Terminal box	KL30AAA	KL30AAA	KL30AAA	KL30AAB	KL30AAB	KL30AAB	5KL30AAF
6	Tie rods PLM 90							5KL22AAA
8	Adaptor	KL21AAA	KL21AAB	KL21AAB	KL21AAB	KL21AAC	KL21AAC	5KL21AAA
13	Fan cover	KL29AAC	KL29AAD	KL29AAD	KL29AAD	KL29AAE	KL29AAE	5KL29AAA

SINGLE UNIT

Pump

19	Seal housing plate	160102450	160102450	160102450	160102450	160102450	160102450	160102450
15	Pump body	151300850	151300850	151300850	151300850	151300860	151300860	151300860
			151300850	151300860		151300870	151300870	151300870
18	Diffuser	162800880	162800880	162800880	162800880	162800890	162800890	162800890
			162800880			162800890	162800890	162800890
20	Support foot	161403630	161403630	161403630	161403630	161403630	161403630	161403630

Motor

5	Capacitor 1 ~ 2.2 KW uF/450V	150990420	150990430	150990440	150990450	150990460	150990480	5828AAB
		14	16	20	25	30	40	70
14	Base with pins	158160620	158160660	158160680	158160700	158160500	158160510	5830AAA
11	Rear shield NDE							5KL20AAZ
12	Fan SM71 - 80 / PLM90	140760150	140760150	140760150	140760150	140760160	140760160	540760010

* Recommended spare parts - Parti di ricambio consigliate

* Pièces détachées conseillées - Empfohlene Ersatzteile

CEA/A - CEA/D

ELP 3 -, 2P 230/400 50	CEA -->	70/3/A	70/5/A	80/5/D	120/5/D	210/3/D	210/4/D	210/5/D	
		107330130	107330140	104480020	104480040	104480060	104480070	104480080	
		120/3/A	210/2/D			370/1/D	370/2/D	370/3/D	370/5/D
		107330160	104480050			104480090	104480100	104480110	104480120
kW ->		0,37	0,55	0,75	0,9 (1.1)	1,1	1,5	1,85 (2.2)	3,0
CEA/A: motors IE1 fitted					CEA/D: motors IE3 (PE, E3) fitted				

KIT

Pump

16-17	Impeller +nut	KL04AFV	KL04AFW	KL04AFX	KL04AFZ	KL04AHC	KL04AHD	KL04AHE	
			KL04AFY	KL04AHB		KL04AHF	KL04AHG	KL04AHH	KL04AHK
22*	Mech Seal + OR	Material-->	VBPGF	VBEGG	VBVGG	U3Q1KGG	U3Q1TGG		
			KL01ABD	KL01ABE	KL01ABF	KL01ADV	KL01ADW		
	Mech Seal + OR	Material-->	JQ1EGG	U3CEGG	JQ1VGG	U3CVGG	U3Q1VGG	--->CEA-V	
			KL01ADR	KL01ADS	KL01ADT	KL01ADU	KL01ADZ	D.14	
23*	OR NBR Kit	KL02ABN							
	OR EPDM Kit	KL02ABP							
	OR FPM Kit	KL02ABQ							
	OR FTFE Kit	KL02ABR							
21	Fill-Drain plug NBR	KL34AAN							
	Fill-Drain plug EPDM	KL34AAP							
	Fill-Drain plug FPM	KL34AAQ							
	Fill-Drain plug PTFE	KL34AAR							

Motor

1	Shaft rotor complete	KL09AAA	KL09AAB	KL09ACN	KL09ACP	KL09ACP	KL09ACQ	5KL09AEV	5KL09AEW
2*	Bearings - Rings	KL11AAA	KL11AAA	KL11AAU	KL11AAU	KL11AAU	KL11AAU	5KL11AA1	5KL11AAS
	Bearings Type	6202/6202		6204/6204 HE				6204/6205HE	6203/6205HE
9	Stator housing	KL25AAB	KL25AAD	KL25ADE	KL25ADG	KL25ADG	KL25ADK	5KL25AAB	5KL25ABP
3	Oil seals - Plugs	KL03ABP	KL03ABP	KL03ABP	KL03ABP	KL03ABP	KL03ABP	5KL03AAA	5KL03AAA
4	Terminal box	KL30AAA	KL30AAA	KL30AAA	KL30AAA	KL30AAA	KL30AAA	5KL30AAE	5KL30AAE
6	Tie rods PLM 90							5KL22AAA	5KL22AAA
8	Adaptor	KL21AAA	KL21AAB	KL21AAC	KL21AAC	KL21AAC	KL21AAC	5KL21AAA	5KL21AAA
13	Fan cover	KL29AAC	KL29AAD	KL29AAE	KL29AAE	KL29AAE	KL29AAE	5KL29AAA	5KL29AAA

SINGLE UNIT

Pump

19	Seal housing plate	160102450	160102450	160102450	160102450	160102450	160102450	160102450	160102450
15	Pump body	151300850	151300850	151300850	151300850	151300860	151300860	151300860	
			151300850	151300860		151300870	151300870	151300870	151300870
18	Diffuser	162800880	162800880	162800880	162800880	162800890	162800890	162800890	
			162800880	162800890		162800890	162800890	162800890	162800890
20	Support foot	161403630	161403630	161403630	161403630	161403630	161403630	161403630	161403630

Motor

5	Capacitor 1 ~ 2.2 KW								
14	Base with pins	158160280	158160280	158160280	158160280	158160280	158160280	5830AAA	5830AAA
11	Rear shield NDE							5KL20AAZ	5KL20AAZ
12	Fan SM71 - 80 / PLM90	140760150	140760150	140760160	140760160	140760160	140760160	540760010	540760010

* Recommended spare parts - Parti di ricambio consigliate

* Pièces détachées conseillées - Empfohlene Ersatzteile

CEA4/A

ELP 3 ~, 4P CEA4 --->
230/400 50

	70/3/A	70/5/A	80/5/A	210/3/A	210/4/A	210/5/A
	107330530	107330550	107330555	107330590	107330600	107330610
		120/3/A	120/5/A			
		107330560	107330570			
kW ->	0.25	0.25	0.25	0.25	0.25	0.25
CEA/A: motors IE1 fitted						

KIT

Pump

16-17*	Impeller + nut		KL04AFV	KL04AFW	KL04AFX	KL04AHC	KL04AHD	KL04AHE
				KL04AFY	KL04AFZ			
22*	Mech Seal + OR	Material-->	VBPGF	VBEGG	VBVGG	U3Q1KGG	U3Q1TGG	
			KL01ABD	KL01ABE	KL01ABF	KL01ADV	KL01ADW	
	Mech Seal + OR	Material-->	JQ1EGG	U3CEGG	JQ1VGG	U3CVGG	U3Q1VGG	--->CEA-V
			KL01ADR	KL01ADS	KL01ADT	KL01ADU	KL01ADZ	D.14
23*	OR NBR Kit		KL02ABN					
	OR EPDM Kit		KL02ABP					
	OR FPM Kit		KL02ABQ					
	OR FTFE Kit		KL02ABR					
21	Fill-Drain plug NBR		KL34AAN					
	Fill-Drain plug EPDM		KL34AAP					
	Fill-Drain plug FPM		KL34AAQ					
	Fill-Drain plug PTFE		KL34AAR					

Motor

1	Shaft rotor complete		KL09AAB	KL09AAB	KL09AAB	KL09AAB	KL09AAB	KL09AAB
2*	Bearings - Rings		KL11AAA	KL11AAA	KL11AAA	KL11AAA	KL11AAA	KL11AAA
	Bearings Type		6202/6202					
9	Stator housing		KL25ABC	KL25ABC	KL25ABC	KL25ABC	KL25ABC	KL25ABC
3	Oil seals - Plugs		KL03ABP	KL03ABP	KL03ABP	KL03ABP	KL03ABP	KL03ABP
4	Terminal box		KL30AAA	KL30AAA	KL30AAA	KL30AAA	KL30AAA	KL30AAA
8	Adaptor		KL21AAB	KL21AAB	KL21AAB	KL21AAB	KL21AAB	KL21AAB
13	Fan cover		KL29AAD	KL29AAD	KL29AAD	KL29AAD	KL29AAD	KL29AAD

SINGLE UNIT

Pump

19	Seal housing plate		160102450	160102450	160102450	160102450	160102450	160102450
15	Pump body		151300850	151300850	151300850	151300860	151300860	151300860
				151300850	151300860			
18	Diffuser		162800880	162800880	162800880	162800890	162800890	162800890
				162800880	162800880			
20	Support foot		161403630	161403630	161403630	161403630	161403630	161403630

You can use either Nut 167000230 or Nut 167000210

Motor

5	Capacitor 1 ~ 2.2 KW							
14	Base with pins		158160280	158160280	158160280	158160280	158160280	158160280
11	Rear shield NDE, PLM							
12	Fan SM71		140760150	140760150	140760150	140760150	140760150	140760150

* Recommended spare parts - Parti di ricambio consigliate

* Pièces détachées conseillées - Empfohlene Ersatzteile

CEA(M)_5_July14_EdA

xylem

