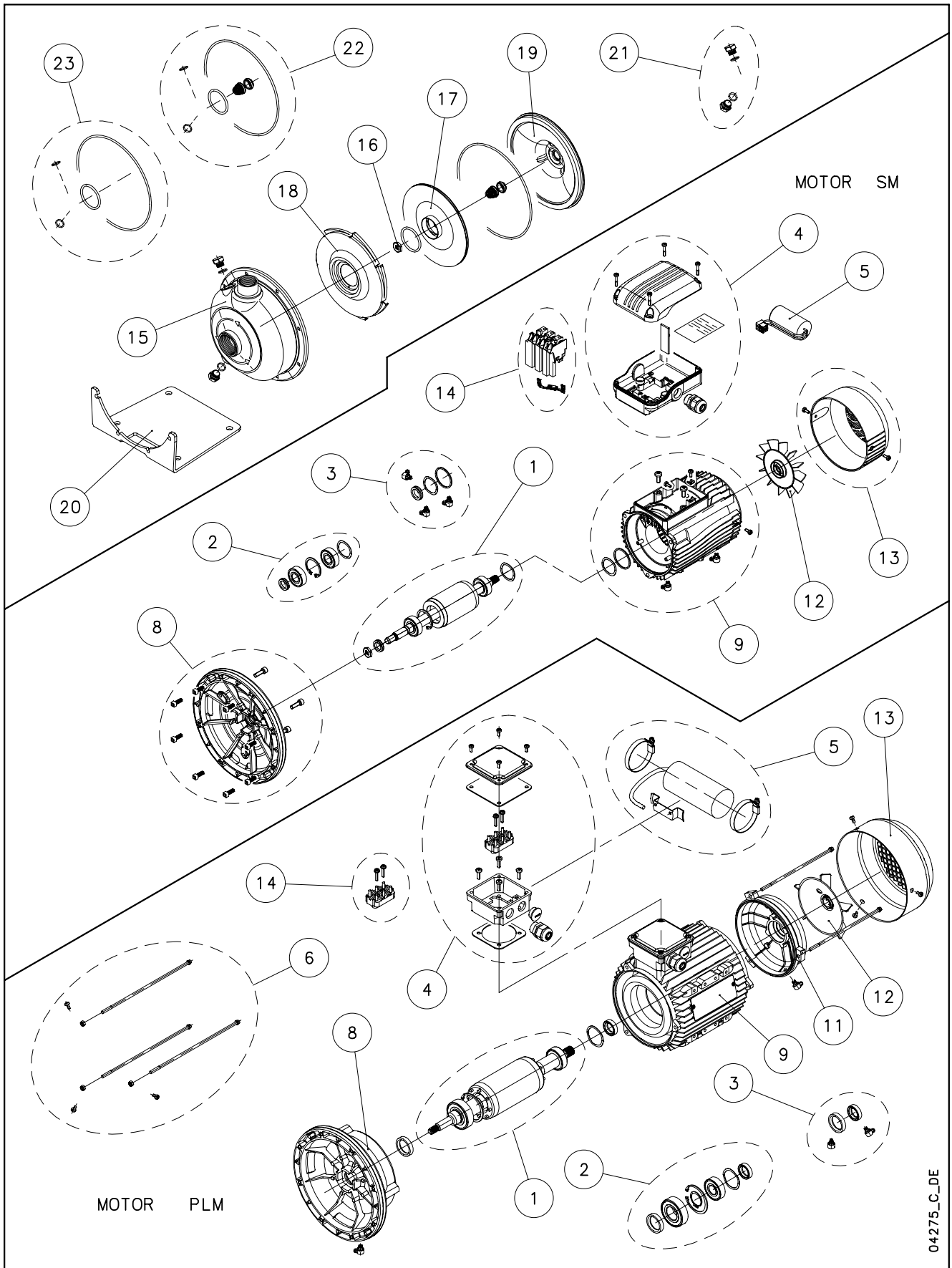


## CEA / CAX



04275\_C\_DE

Lowara, Flygt and Vogel Pumpen are a trademark of Xylem Inc. or one of its subsidiaries. Goulds is a registered trademark of Goulds Pumps, Inc. and is used under license.

| N. | Descrizione<br>it             | Description<br>en              | Description<br>fr                    | Beschreibung<br>de                | Descripción<br>es              | Descrição<br>pt                  |
|----|-------------------------------|--------------------------------|--------------------------------------|-----------------------------------|--------------------------------|----------------------------------|
| 1  | Albero rotore completo        | Shaft rotor complete           | Arbre rotor au complet               | Rotorwelle Komplete               | Eje rotor complete             | Rotor completo                   |
| 2  | Cuscinetti - Anelli           | Bearings - Rings               | Roulements - Anneaux                 | Lager - Stopfen                   | Cojinetes - Anillos            | Rolamentos - Anéis               |
| 3  | Anelli tenuta - Tappi         | Oil seals - Plugs              | Bagues étanchéité-Bouchons           | Abdichtungsringen-Schrauben       | Anillos estanqueidad- Tapones  | Retenores - Bujões               |
| 4  | Scatola morsettieria          | Terminal box                   | Boite a bornier                      | Klemmenkasten                     | Caja de bornes                 | Caixa de terminais               |
| 5  | Condensatore                  | Capacitor                      | Condensateur                         | Kondensator                       | Kondensador                    | Condensador                      |
| 6  | Tiranti PLM90                 | Tie rods PLM90                 | Tiges PLM90                          | Zugstangen PLM90                  | Tirantes PLM90                 | Tirantes PLM90                   |
| 8  | Lanterna                      | Adaptor                        | Lanterne                             | Laterne                           | Adaptador                      | Adaptador                        |
| 9  | Cassa statore                 | Stator housing                 | Carcasse stator                      | Statorgehäuse                     | Carcasa estator                | Carcaça estator                  |
| 11 | Scudo posteriore NDE          | Rear shield NDE                | Flasque arriere NDE                  | Hinteren Schild NDE               | Escudo posterior NDE           | Proteção posterior NDE           |
| 12 | Ventola                       | Fan                            | Ventilateur                          | Lüfterrad                         | Ventilador                     | Ventilador                       |
| 13 | Copriventola                  | Fan cover                      | Couvercle de ventilateur             | Lüfterradhaube                    | Tapa ventilador                | Cobertura do ventilador          |
| 14 | Basetta con perni             | Base with pins                 | Bornier avec fiches                  | Klemmbrett mit zapfen             | Soporte de pernos              | Caixa de terminais               |
| 14 | Morsettieria ( Plug-in )      | Terminal block ( Plug in )     | Bornier enfichable ( Plug in )       | Steck-Klemmkasten ( Plug in )     | Place de bornes ( Plug in )    | Terminais ( Plug in )            |
| 15 | Corpo pompa                   | Pump body                      | Corps de pompe                       | Pumpengehäuse                     | Caja bomba                     | Voluta bomba                     |
| 16 | Dado girante                  | Impeller nut or bolt           | Roue ecrou                           | Laufmutter                        | Rodete tuerca                  | Parafuso do Impulsor             |
| 17 | Girante                       | Impeller                       | Roue                                 | Laufrad                           | Rodete                         | Impulsor                         |
| 18 | Diffusore                     | Diffuser                       | Diffuseur                            | Diffusor                          | Difusor                        | Difusor                          |
| 19 | Disco porta tenuta            | Seal housing plate             | Disque de support garniture          | Dichtungsdeckel                   | Disco de alojamiento sello     | Dique alojamento do selo         |
| 20 | Piede pompa                   | Pump foot                      | Piede de pompe                       | Pumpenstützfuss                   | Bomba pies                     | Pé da bomba                      |
| 21 | Tappi + OR                    | Plugs + ORings                 | Bouchons + joints torique            | Schrauben + OR                    | Tapones + junta tórica         | Bujões + OR                      |
| 22 | Kit tenuta mecc. + OR         | Mechanical seal + OR kit       | Kit garniture mec. + joints toriques | Gleitringdichtung + O-Ring [Satz] | Kit sello mec. + junta tórica  | Kit Empanque mecanico + O-Ring   |
| 23 | Kit guarnizioni OR            | O ring kit                     | Kit joints toriques                  | Dichtungssatz                     | Kit juntas tóricas             | Kit guarnições OR                |
| N. | Beschrijving<br>nl            | Περιγραφή<br>el                | Açıklama<br>tr                       | Kuvaus<br>fi                      | Описание<br>ru                 | Opis<br>pl                       |
| 1  | Rotor as compleet             | επάνω και το κάτω μέρος του    | Rotor mili                           | Roottori akseli                   | ось ротора                     | Wałek kompletny (z rotorem)      |
| 2  | Lagers - Ringen               | Τριβεία- δακτύλιοι             | Rulmanlar - Ringes                   | Laakeri - Rengas                  | Подшипник - кольцами           | łożyska - pierścienie            |
| 3  | Zegel ringen - Vulpluggen     | πτερελαίου παρεμβύσματα - πώμα | Fok ringes - Tapalar (Fişindedir)    | Ölly tiivisteet - Tulppa          | прокладки для нефти - штепсели | Uszczelka olejowa – zatyczki     |
| 4  | Kabelkast                     | Πίνακες τερματικών             | Terminal Kutu                        | Liitinkotelon kansi               | соединители коробка            | Skrzynka zaciskowa               |
| 5  | Condensator                   | πυκνωτ                         | Kondansatör                          | Kondensaattori                    | конденсатор                    | Kondensator                      |
| 6  | Trekstangen PLM90             | Ράβδοι σύνδεσμοι PLM90         | Çekme çubukları PLM90                | Ankkurirauta PLM90                | Тяги PLM90                     | Szpiłki gwintowane PLM90         |
| 8  | Lantaarnstuk                  | προσαρμογέα                    | Adaptör                              | Adaptér                           | адаптер                        | Piasta                           |
| 9  | Statorhuis                    | Έδρα κατοίκι                   | Statör karteri                       | Staattori kaapit                  | Корпус статор                  | Stator Nadawcza                  |
| 11 | Achtergedeelte Motorhuis NDE  | Πίσω πτεράσμα NDE              | Arka koruma NDE                      | Laakerikilpi NDE-pää              | назад щит NDE                  | Tyłna tarcza NDE                 |
| 12 | Ventilator                    | Ανεμιστήρ                      | Vantilatör                           | Tuuletin                          | вентилятор                     | Wentylator                       |
| 13 | Ventilatorkap                 | Ανεμιστήρ Ελάσματα κάλυψης     | Vantilatör kapağı                    | Tuuletinkotelo                    | вентилятор крышка              | Oslona wentylatora               |
| 14 | Klemmenbord                   | Τερματικές μονάδες             | Kaide bacaklar                       | Liitinalusta                      | контактная колодка             | Podstawa ze sworzeniami          |
| 14 | Klemmenbord (Plug in)         | Τερματικές μονάδες ( Plug in ) | Kaide bacaklar Plug in               | Liitinalusta Plug in              | контактная колодка Plug in     | Podstawa ze sworzeniami Plug in  |
| 15 | Pomphuis                      | Αντλή πλαίσια επέκδοση         | Pompa gövdesi                        | Pumpu kotelo                      | Корпус насоса                  | Korpus pompy                     |
| 16 | Bout de waaier                | Φτερωτές στροφέιο μπουλόνι     | Rotorun somun                        | Juoksupyörän pultit               | импеллер орех                  | Wirnika (nakrętka)               |
| 17 | Waaier                        | Φτερωτές στροφέιο              | Pompa rotorun                        | Juoksupyörän                      | импеллер                       | Wirnik                           |
| 18 | Diffusor                      | διαχυτήρας                     | Difüzör                              | Diffuusioyksikön                  | диффузор                       | Dyfuzor                          |
| 19 | Dichtingssteunplaat           | Μηχανικό Σφραγίδα Πλάκας       | Sızdırmazlık elemanı diski           | Tiivisteen lautanen               | мех. печать пластинка          | Tarcza uszczelki                 |
| 20 | Pomp voet                     | Αντλή ποδιού                   | Pompa ayak                           | Pumpu jalka                       | насос стопы                    | Pompy silnika                    |
| 21 | Valpluggen + O-ring           | πώμα+ OR                       | Şarj fişi + O-Ring                   | Tulppa + O-rengassarja            | штепсели + OR                  | Zatyczki (korek) + OR            |
| 22 | Kit mech. afdichting + O-ring | Μηχανική σφραγίδα Σετ + OR     | Mekanik salmastra kiti + O-Ring      | Mek. akseliiviste + O-rengassarja | Комплект мех. печать + OR      | Zestaw uszczelniający mech. + OR |
| 23 | Set O-ringafdichtingen        | παρεμβύσματα OR Σετ            | O-Ring kiti                          | O-rengassarja                     | Комплект прокладок OR          | Zestaw uszczelkek OR             |

## CEAM/A - CEAM/P

ELP 1 ~, 2P  
220 - 240 50

CEAM --->

|       | 70/3/A    | 70/5/A    | 80/5/A    | 120/5/A   | 210/3/A   | 210/4/A   | 210/5/P   |
|-------|-----------|-----------|-----------|-----------|-----------|-----------|-----------|
|       | 107330000 | 107330010 | 107330020 | 107330040 | 107330060 | 107330070 | 101800080 |
|       |           | 120/3/A   | 210/2/A   |           | 370/1/A   | 370/2/A   | 370/3/P   |
|       |           | 107330030 | 107330050 |           | 107330090 | 107330100 | 101800110 |
| kW -> | 0,37      | 0,55      | 0,75      | 0,9       | 1,1       | 1,5       | 1,85      |

KIT

### Pump

|        |                      |             |               |               |               |                |                |           |
|--------|----------------------|-------------|---------------|---------------|---------------|----------------|----------------|-----------|
| 16-17* | Impeller + nut       | KL04AFV     | KL04AFW       | KL04AFX       | KL04AFZ       | KL04AHC        | KL04AHD        | KL04AHE   |
|        |                      |             | KL04AFY       | KL04AHB       |               | KL04AHF        | KL04AHG        | KL04AHH   |
| 22*    | Mech Seal + OR       | Material--> | <b>VBPGF</b>  | <b>VBEGG</b>  | <b>VBVGG</b>  | <b>U3Q1KGG</b> | <b>U3Q1TGG</b> |           |
|        |                      |             | KL01ABD       | KL01ABE       | KL01ABF       | KL01ADV        | KL01ADW        |           |
|        | Mech Seal + OR       | Material--> | <b>JQ1EGG</b> | <b>U3CEGG</b> | <b>JQ1VGG</b> | <b>U3CVGG</b>  | <b>U3Q1VGG</b> | --->CEA-V |
|        |                      |             | KL01ADR       | KL01ADS       | KL01ADT       | KL01ADU        | KL01ADZ        | D.14      |
| 23*    | OR NBR Kit           | KL02ABN     |               |               |               |                |                |           |
|        | OR EPDM Kit          | KL02ABP     |               |               |               |                |                |           |
|        | OR FPM Kit           | KL02ABQ     |               |               |               |                |                |           |
|        | OR FTFE Kit          | KL02ABR     |               |               |               |                |                |           |
| 21     | Fill-Drain plug NBR  | KL34AAN     |               |               |               |                |                |           |
|        | Fill-Drain plug EPDM | KL34AAP     |               |               |               |                |                |           |
|        | Fill-Drain plug FPM  | KL34AAQ     |               |               |               |                |                |           |
|        | Fill-Drain plug PTFE | KL34AAR     |               |               |               |                |                |           |

### Motor

|    |                      |           |         |         |         |           |         |           |
|----|----------------------|-----------|---------|---------|---------|-----------|---------|-----------|
| 1  | Shaft rotor complete | KL09AAA   | KL09AAH | KL09AAK | KL09AAL | KL09AAM   | KL09AAN | 5KL09AAS  |
| 2* | Bearings - Rings     | KL11AAA   | KL11AAA | KL11AAA | KL11AAA | KL11AAC   | KL11AAC | 5KL11AAA  |
|    | Bearings Type        | 6202/6202 |         |         |         | 6204/6204 |         | 6203/6205 |
| 9  | Stator housing       | KL25AAA   | KL25AAC | KL25AAE | KL25AAG | KL25AAL   | KL25AAN | 5KL25AAG  |
| 3  | Oil seals - Plugs    | KL03ABP   | KL03ABP | KL03ABP | KL03ABP | KL03ABP   | KL03ABP | 5KL03AAA  |
| 4  | Terminal box         | KL30AAA   | KL30AAA | KL30AAA | KL30AAB | KL30AAAB  | KL30AAB | 5KL30AAF  |
| 6  | Tie rods PLM 90      |           |         |         |         |           |         | 5KL22AAA  |
| 8  | Adaptor              | KL21AAA   | KL21AAB | KL21AAB | KL21AAB | KL21AAC   | KL21AAC | 5KL21AAA  |
| 13 | Fan cover            | KL29AAC   | KL29AAD | KL29AAD | KL29AAD | KL29AAE   | KL29AAE | 5KL29AAA  |

### SINGLE UNIT

#### Pump

|    |                    |           |           |           |           |           |           |           |
|----|--------------------|-----------|-----------|-----------|-----------|-----------|-----------|-----------|
| 19 | Seal housing plate | 160102450 | 160102450 | 160102450 | 160102450 | 160102450 | 160102450 | 160102450 |
| 15 | Pump body          | 151300850 | 151300850 | 151300850 | 151300850 | 151300860 | 151300860 | 151300860 |
|    |                    |           | 151300850 | 151300860 |           | 151300870 | 151300870 | 151300870 |
| 18 | Diffuser           | 162800880 | 162800880 | 162800880 | 162800880 | 162800890 | 162800890 | 162800890 |
|    |                    |           | 162800880 |           |           | 162800890 | 162800890 | 162800890 |
| 20 | Support foot       | 161403630 | 161403630 | 161403630 | 161403630 | 161403630 | 161403630 | 161403630 |

#### Motor

|    |                       |           |           |           |           |           |           |           |
|----|-----------------------|-----------|-----------|-----------|-----------|-----------|-----------|-----------|
| 5  | Capacitor 1 ~ 2.2 KW  | 150990420 | 150990430 | 150990440 | 150990450 | 150990460 | 150990480 | 5828AAB   |
|    | uF/450V               | 14        | 16        | 20        | 25        | 30        | 40        | 70        |
| 14 | Base with pins        | 158160620 | 158160660 | 158160680 | 158160700 | 158160500 | 158160510 | 5830AAA   |
| 11 | Rear shield NDE       |           |           |           |           |           |           | 5KL20AAZ  |
| 12 | Fan SM71 - 80 / PLM90 | 140760150 | 140760150 | 140760150 | 140760150 | 140760160 | 140760160 | 540760010 |

\* Recommended spare parts - Parti di ricambio consigliate

\* Pièces détachées conseillées - Empfohlene Ersatzteile

CEA(M)\_5\_Feb12\_EdA

## CEA/A - CEA/D - CEA/P

ELP 3 ~, 2P CEA ---->  
230/400 50

|                          | 70/3/A    | 70/5/A    | 80/5/C    | 120/5/C                      | 210/3/C   | 210/4/C   | 210/5/C   |           |
|--------------------------|-----------|-----------|-----------|------------------------------|-----------|-----------|-----------|-----------|
|                          | 107330130 | 107330140 | 104290020 | 104290040                    | 104290060 | 104480070 | 104290080 |           |
|                          |           | 120/3/A   | 210/2/C   |                              | 370/1/C   | 370/2/C   | 370/3/C   | 370/5/P   |
|                          |           | 107330160 | 104290050 |                              | 104290090 | 104480100 | 104290110 | 101800260 |
| kW ->                    | 0,37      | 0,55      | 0,75      | 0,9                          | 1,1       | 1,5       | 1,85      | 3,0       |
| CEA/A: motors IE1 fitted |           |           |           | CEA/C, /P: motors IE2 fitted |           |           |           |           |

KIT

### Pump

|        |                      |             |               |               |               |                |                |            |         |         |
|--------|----------------------|-------------|---------------|---------------|---------------|----------------|----------------|------------|---------|---------|
| 16-17* | Impeller +nut        |             | KL04AFV       | KL04AFW       | KL04AFX       | KL04AFZ        | KL04AHC        | KL04AHD    | KL04AHE |         |
|        |                      |             |               | KL04AFY       | KL04AHB       |                | KL04AHF        | KL04AHG    | KL04AHH | KL04AHK |
| 22*    | Mech Seal + OR       | Material--> | <b>VBPGF</b>  | <b>VBEGG</b>  | <b>VBVGG</b>  | <b>U3Q1KGG</b> | <b>U3Q1TGG</b> |            |         |         |
|        |                      |             | KL01ABD       | KL01ABE       | KL01ABF       | KL01ADV        | KL01ADW        |            |         |         |
|        | Mech Seal + OR       | Material--> | <b>JQ1EGG</b> | <b>U3CEGG</b> | <b>JQ1VGG</b> | <b>U3CVGG</b>  | <b>U3Q1VGG</b> | ---->CEA-V |         |         |
|        |                      |             | KL01ADR       | KL01ADS       | KL01ADT       | KL01ADU        | KL01ADZ        | D.14       |         |         |
| 23*    | OR NBR Kit           |             | KL02ABN       |               |               |                |                |            |         |         |
|        | OR EPDM Kit          |             | KL02ABP       |               |               |                |                |            |         |         |
|        | OR FPM Kit           |             | KL02ABQ       |               |               |                |                |            |         |         |
|        | OR FTFE Kit          |             | KL02ABR       |               |               |                |                |            |         |         |
| 21     | Fill-Drain plug NBR  |             | KL34AAN       |               |               |                |                |            |         |         |
|        | Fill-Drain plug EPDM |             | KL34AAP       |               |               |                |                |            |         |         |
|        | Fill-Drain plug FPM  |             | KL34AAQ       |               |               |                |                |            |         |         |
|        | Fill-Drain plug PTFE |             | KL34AAR       |               |               |                |                |            |         |         |

### Motor

|    |                      |  |           |         |           |         |         |           |          |          |
|----|----------------------|--|-----------|---------|-----------|---------|---------|-----------|----------|----------|
| 1  | Shaft rotor complete |  | KL09AAA   | KL09AAB | KL09AAF   | KL09AAG | KL09AAG | 5KL09ACQ  | 5KL09ACR | 5KL09AAT |
| 2* | Bearings - Rings     |  | KL11AAA   | KL11AAA | KL11AAC   | KL11AAC | KL11AAC | 5KL11AAA  | 5KL11AAA | 5KL11AAA |
|    | Bearings Type        |  | 6202/6202 |         | 6204/6204 |         |         | 6203/6205 |          |          |
| 9  | Stator housing       |  | KL25AAB   | KL25AAD | KL25AC5   | KL25AC7 | KL25AC7 | 5KL25AAA  | 5KL25AAB | 5KL25AAE |
| 3  | Oil seals - Plugs    |  | KL03ABP   | KL03ABP | KL03ABP   | KL03ABP | KL03ABP | 5KL03AAA  | 5KL03AAA | 5KL03AAA |
| 4  | Terminal box         |  | KL30AAA   | KL30AAA | KL30AAA   | KL30AAA | KL30AAA | 5KL30AAE  | 5KL30AAE | 5KL30AAE |
| 6  | Tie rods PLM 90      |  |           |         |           |         |         | 5KL22AAA  | 5KL22AAA | 5KL22AAA |
| 8  | Adaptor              |  | KL21AAA   | KL21AAB | KL21AAC   | KL21AAC | KL21AAC | 5KL21AAA  | 5KL21AAA | 5KL21AAA |
| 13 | Fan cover            |  | KL29AAC   | KL29AAD | KL29AAE   | KL29AAE | KL29AAE | 5KL29AAA  | 5KL29AAA | 5KL29AAA |

### SINGLE UNIT

#### Pump

|    |                    |  |           |           |           |           |           |           |           |           |
|----|--------------------|--|-----------|-----------|-----------|-----------|-----------|-----------|-----------|-----------|
| 19 | Seal housing plate |  | 160102450 | 160102450 | 160102450 | 160102450 | 160102450 | 160102450 | 160102450 | 160102450 |
| 15 | Pump body          |  | 151300850 | 151300850 | 151300850 | 151300850 | 151300860 | 151300860 | 151300860 |           |
|    |                    |  |           | 151300850 | 151300860 |           | 151300870 | 151300870 | 151300870 | 151300870 |
| 18 | Diffuser           |  | 162800880 | 162800880 | 162800880 | 162800880 | 162800890 | 162800890 | 162800890 |           |
|    |                    |  |           | 162800880 | 162800890 |           | 162800890 | 162800890 | 162800890 | 162800890 |
| 20 | Support foot       |  | 161403630 | 161403630 | 161403630 | 161403630 | 161403630 | 161403630 | 161403630 | 161403630 |

#### Motor

|    |                       |  |           |           |           |           |           |           |           |           |
|----|-----------------------|--|-----------|-----------|-----------|-----------|-----------|-----------|-----------|-----------|
| 5  | Capacitor 1 ~ 2.2 KW  |  |           |           |           |           |           |           |           |           |
| 14 | Base with pins        |  | 158160280 | 158160280 | 158160280 | 158160280 | 158160280 | 158160280 | 5830AAA   | 5830AAA   |
| 11 | Rear shield NDE       |  |           |           |           |           |           |           | 5KL20AAZ  | 5KL20AAZ  |
| 12 | Fan SM71 - 80 / PLM90 |  | 140760150 | 140760150 | 140760160 | 140760160 | 140760160 | 140760160 | 540760010 | 540760010 |

\* Recommended spare parts - Parti di ricambio consigliate

\* Pièces détachées conseillées - Empfohlene Ersatzteile

CEA(M)\_5\_Feb12\_EdA

## CEA4/A

ELP 3 ~, 4P CEA4 --->  
230/400 50

|                         | 70/3/A    | 70/5/A    | 80/5/A    | 210/3/A   | 210/4/A   | 210/5/A   |
|-------------------------|-----------|-----------|-----------|-----------|-----------|-----------|
|                         | 107330530 | 107330550 | 107330555 | 107330590 | 107330600 | 107330610 |
|                         |           | 120/3/A   | 120/5/A   |           |           |           |
|                         |           | 107330560 | 107330570 |           |           |           |
| kW ->                   | 0.25      | 0.25      | 0.25      | 0.25      | 0.25      | 0.25      |
| CA/A: motors IE1 fitted |           |           |           |           |           |           |

KIT

### Pump

|        |                      |            |               |               |               |                |                |           |
|--------|----------------------|------------|---------------|---------------|---------------|----------------|----------------|-----------|
| 16-17* | Impeller + nut       |            | KL04AFV       | KL04AFW       | KL04AFX       | KL04AHC        | KL04AHD        | KL04AHE   |
|        |                      |            |               | KL04AFY       | KL04AFZ       |                |                |           |
| 22*    | Mech Seal + OR       | Material-> | <b>VBPGF</b>  | <b>VBEGG</b>  | <b>VBVGG</b>  | <b>U3Q1KGG</b> | <b>U3Q1TGG</b> |           |
|        |                      |            | KL01ABD       | KL01ABE       | KL01ABF       | KL01ADV        | KL01ADW        |           |
|        | Mech Seal + OR       | Material-> | <b>JQ1EGG</b> | <b>U3CEGG</b> | <b>JQ1VGG</b> | <b>U3CVGG</b>  | <b>U3Q1VGG</b> | --->CEA-V |
|        |                      |            | KL01ADR       | KL01ADS       | KL01ADT       | KL01ADU        | KL01ADZ        | D.14      |
| 23*    | OR NBR Kit           |            | KL02ABN       |               |               |                |                |           |
|        | OR EPDM Kit          |            | KL02ABP       |               |               |                |                |           |
|        | OR FPM Kit           |            | KL02ABQ       |               |               |                |                |           |
|        | OR FTFE Kit          |            | KL02ABR       |               |               |                |                |           |
| 21     | Fill-Drain plug NBR  |            | KL34AAN       |               |               |                |                |           |
|        | Fill-Drain plug EPDM |            | KL34AAP       |               |               |                |                |           |
|        | Fill-Drain plug FPM  |            | KL34AAQ       |               |               |                |                |           |
|        | Fill-Drain plug PTFE |            | KL34AAR       |               |               |                |                |           |

### Motor

|    |                      |  |           |         |         |         |         |         |
|----|----------------------|--|-----------|---------|---------|---------|---------|---------|
| 1  | Shaft rotor complete |  | KL09AAB   | KL09AAB | KL09AAB | KL09AAB | KL09AAB | KL09AAB |
| 2* | Bearings - Rings     |  | KL11AAA   | KL11AAA | KL11AAA | KL11AAA | KL11AAA | KL11AAA |
|    | Bearings Type        |  | 6202/6202 |         |         |         |         |         |
| 9  | Stator housing       |  | KL25ABC   | KL25ABC | KL25ABC | KL25ABC | KL25ABC | KL25ABC |
| 3  | Oil seals - Plugs    |  | KL03ABP   | KL03ABP | KL03ABP | KL03ABP | KL03ABP | KL03ABP |
| 4  | Terminal box         |  | KL30AAA   | KL30AAA | KL30AAA | KL30AAA | KL30AAA | KL30AAA |
| 8  | Adaptor              |  | KL21AAB   | KL21AAB | KL21AAB | KL21AAB | KL21AAB | KL21AAB |
| 13 | Fan cover            |  | KL29AAD   | KL29AAD | KL29AAD | KL29AAD | KL29AAD | KL29AAD |

### SINGLE UNIT

#### Pump

|    |                    |  |           |           |           |           |           |           |
|----|--------------------|--|-----------|-----------|-----------|-----------|-----------|-----------|
| 19 | Seal housing plate |  | 160102450 | 160102450 | 160102450 | 160102450 | 160102450 | 160102450 |
| 15 | Pump body          |  | 151300850 | 151300850 | 151300850 | 151300860 | 151300860 | 151300860 |
|    |                    |  |           | 151300850 | 151300860 |           |           |           |
| 18 | Diffuser           |  | 162800880 | 162800880 | 162800880 | 162800890 | 162800890 | 162800890 |
|    |                    |  |           | 162800880 | 162800880 |           |           |           |
| 20 | Support foot       |  | 161403630 | 161403630 | 161403630 | 161403630 | 161403630 | 161403630 |

You can use either Nut 167000230 or Nut 167000210

#### Motor

|    |                      |  |           |           |           |           |           |           |
|----|----------------------|--|-----------|-----------|-----------|-----------|-----------|-----------|
| 5  | Capacitor 1 ~ 2.2 KW |  |           |           |           |           |           |           |
| 14 | Base with pins       |  | 158160280 | 158160280 | 158160280 | 158160280 | 158160280 | 158160280 |
| 11 | Rear shield NDE, PLM |  |           |           |           |           |           |           |
| 12 | Fan SM71             |  | 140760150 | 140760150 | 140760150 | 140760150 | 140760150 | 140760150 |

\* Recommended spare parts - Parti di ricambio consigliate

\* Pièces détachées conseillées - Empfohlene Ersatzteile

# xylem

