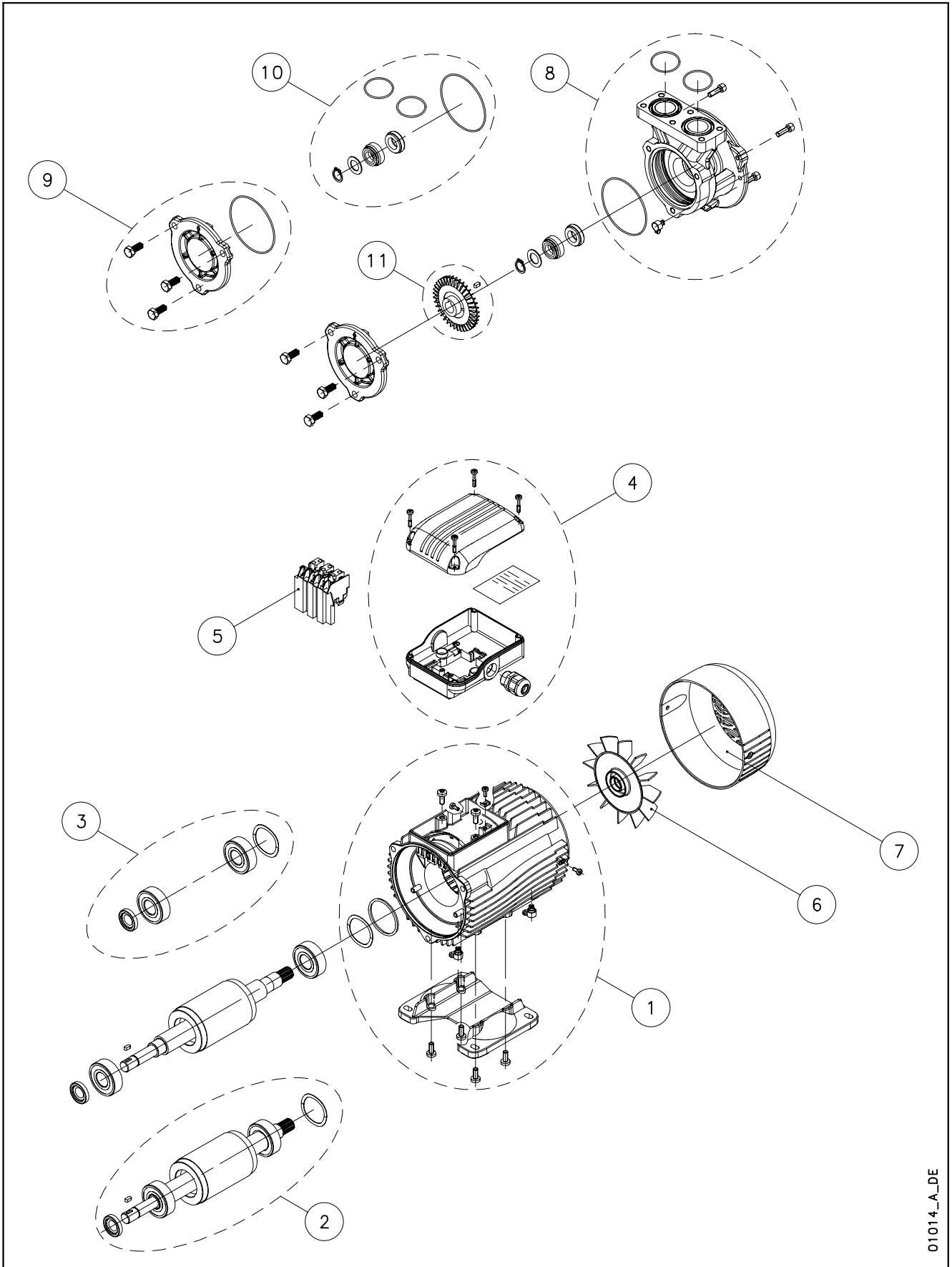


## PR 60 - 80



01014\_A\_DE

Lowara is a trademark of Xylem Inc. or one of its subsidiaries.



## PR 60/C-PR 80/C

| KIT  | DESCRIZIONE<br>DESCRIPTION                       | MODELLO POMPA - PUMP MODEL |           |         |           |           |
|------|--|----------------------------|-----------|---------|-----------|-----------|
|      |  | PR60E/C                    | PR60V/C   |         | PR80E/C   | PR80V/C   |
|      |  | 104410400                  | 104410420 |         | 104410410 | 104410430 |
|      |  | 1.1 kW                     | 1.1 kW    | 2.2 kW  | 2.2 kW    |           |
|      |  | SM IE2                     |           | PLM IE2 |           |           |
| 1    | CASSA MOTORE<br>MOTOR CASING                     | KL25AC8                    | KL25AC8   |         | 5KL25AAB  | 5KL25AAB  |
|      | PIEDE MOTORE<br>MOTOR FOOT                       | KL23AAA                    | KL23AAA   |         | 5KL23AAA  | 5KL23AAA  |
| 2    | ALBERO-ROTORE-CUSCINETTI<br>SHAFT-ROTOR-BEARINGS | KR7490030                  | KR7490030 |         | 5KL09ACT  | 5KL09ACT  |
| * 3  | CUSCINETTI<br>BEARINGS                           | KR7490040                  | KR7490040 |         | 5KL11AAA  | 5KL11AAA  |
| 4    | SCATOLA MORSETTIERA<br>TERMINAL BOX              | KR7490050                  | KR7490050 |         | 5KL30AAE  | 5KL30AAE  |
| 5    | MORSETTIERA PLUG IN<br>PLUG IN BLOCK             | KR7490060                  | KR7490060 |         | 5830AAA   | 5830AAA   |
| 6    | VENTOLA<br>FAN                                   | 140760160                  | 140760160 |         | 540760010 | 540760010 |
| 7    | COPRIVENTOLA<br>FAN COVER                        | KR7490080                  | KR7490080 |         | 5KL29AAA  | 5KL29AAA  |
| 8    | CORPO POMPA + OR EPDM<br>PUMP BODY + OR          | KR7490090                  | -         |         | KL15ABG   | -         |
|      | CORPO POMPA + OR FPM<br>PUMP BODY + OR           | -                          | KR7490110 |         | -         | KL15ABH   |
| 9    | FLANGIA FRONTALE + OR EPDM<br>FRONT FLANGE + OR  | KR7490130                  | -         |         | KR7490140 | -         |
|      | FLANGIA FRONTALE + OR FPM<br>FRONT FLANGE + OR   | -                          | KR7490150 |         | -         | KR7490160 |
| * 10 | KIT TENUTA + OR BQ1E2GG<br>SEAL + OR             | KR7490170                  | -         |         | KR7490180 | -         |
|      | KIT TENUTA + OR Q1Q2VFF<br>SEAL + OR             | -                          | KR7490190 |         | -         | KR7490200 |
| 11   | GIRANTE<br>IMPELLER                              | KR7490210                  | KR7490210 |         | KR7490220 | KR7490220 |

\* RICAMBI RACCOMANDATI  
RECOMMENDED SPARE PARTS

xylem